



Catholic School Leadership: Leading from Within

Leadership Team Initiative:
Transcending the Challenges

Kristin Barstow Melley, Associate Director, Roche Center for Catholic Education

Agenda:

- Catholic Identity and Student Experience
- Leadership Conceptualization
- 4 Pillars to foster leadership from within
- New approaches to hand on the faith
 - foster Catholic identity
 - foster Catholic sacramentality

©KristinBMelley/Boston College

National Standards and Benchmarks

Mission and
Catholic Identity



©KristinBMelley/Boston College



Domain 1

the landscape

©KristinBMelley/Boston College



Standard 1

Being Mission Driven

©KristinBMelley/Boston College



Standard 2

school-wide experience

©KristinBMelley/Boston College



Standard 3

Student Experience



Standard 4

Adult Experience

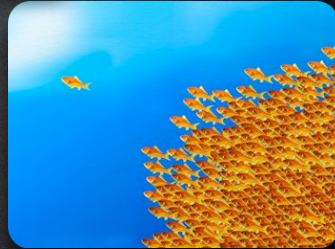
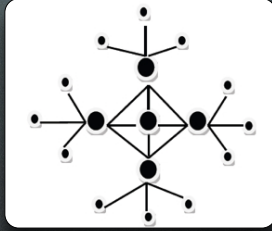
©KristinBMelley/Boston College

What does effective school leadership look like?



©KristinBMelley/Boston College

What does effective leadership look like?



©KristinBMelley/Boston College

Heroic Leadership: Best Practices from a 450-Year-Old Company that Changed the World

by Chris Lowney

Self Awareness

Ingenuity

Love

Heroism

©KristinBMelley/Boston College

Self Awareness

Examen, Meditative Contemplation, Intention



©KristinBMelley/Boston College



Resource of time

©KristinBMelley/Boston College

DO MY ACTIVITIES ALIGN
WITH MY DESIRES?

©KristinBMelley/Boston College

Urgent

Not Urgent

Important

Not Important

©KristinBMelley/Boston College

Catholic Leadership:

“Today’s world stands in great need of witnesses, not so much of teachers but rather of witnesses.

It’s not so much about speaking, but rather speaking with our whole lives.”

--Pope Francis,
May 18, 2013





Ingenuity

©KristinBMelley/Boston College



Love

Colleague and Student Relationships

©KristinBMelley/Boston College



Heroism

- Help others to fulfill their nature
- Smell like your sheep

©KristinBMelley/Boston College

Leadership Teams

- Become aware and help make aware.
- Welcome and share ingenuity.
- Love and respect the community. Stay centered on shared values and be inspired by different approaches.
- Be heroic, brave. Lead and be led.

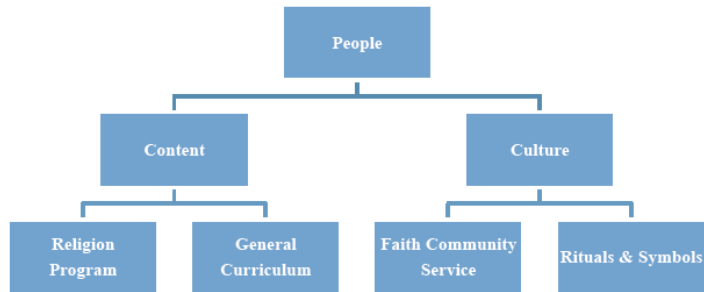


©KristinBMelley/Boston College

Catholic Identity--

2010 Study by John J. Convey
The Catholic University of America, Washington, DC Perceptions of Catholic Identity: Views of Catholic School Administrators and Teachers

Figure 1: Components of Catholic Identity



©KristinBMelley/Boston College

Catholic Identity--

2010 Study by John J. Convey
The Catholic University of America, Washington, DC Perceptions of Catholic Identity: Views of Catholic School Administrators and Teachers

Table 2: Average Ratings of Components of Catholic Identity

Component	Mean	S.D.	Essential
School Day Begins with Prayer	3.90	.375	92%
Strong Faith Community	3.90	.343	91%
Religion Course Presents Catholic Teachings	3.88	.403	90%
Periodic Schoolwide Liturgies	3.87	.417	89%
Students Participate in Service	3.85	.433	87%
Teacher of Religion is Catholic	3.77	.555	82%
Crucifix in Every Classroom	3.66	.702	77%
Principal is Catholic	3.66	.649	74%
Class Begins with Prayer	3.46	.815	63%
Catholic Teachings Integrated in Curriculum	3.48	.755	61%
Vast Majority of Teachers are Catholic	3.19	.800	39%
Vast Majority of Students are Catholic	2.82	.762	15%

©KristinBMelley/Boston College

The Fathers of the Second Vatican Council described the distinguishing characteristic of a Catholic school in *Gravissimum Educationis*, The Declaration on Christian Education (Paul VI, 1965), as follows:

The influence of the Church in the field of education is shown in a special manner by the Catholic school. No less than other schools does the Catholic school pursue cultural goals and the human formation of youth. But its proper function is to create for the school community a special atmosphere **animated** by the Gospel spirit of freedom and charity, to help youth grow according to the new creatures they were made through baptism as they develop their own personalities, and finally to order the whole of human culture to the news of salvation so that the knowledge the students gradually acquire of the world, life and man is illumined by faith.

©KristinBMelley/Boston College

Catholic Identity-- ...and what would STUDENTS say?

My Voice, Our Catholic School
2006-2008 Aggregate
Demographics

Religious Affiliation		
Affiliation	Count	Percent
Catholic	8247	75.2%
Jewish	108	1.0%
Christian, non-Catholic	1764	16.1%
Muslim	65	0.6%
Other	783	7.1%
TOTAL	10967	100.0%

Do you regularly attend religious services?		
Attendance	Count	Percent
Yes	5650	51.8%
No	5264	48.2%
TOTAL	10914	100.0%

Grade of Students		
Grade	Count	Percent
6	98	0.9%
7	130	1.2%
8	157	1.4%
9	3010	27.1%
10	2755	24.8%
11	2626	23.6%
12	2346	21.1%
TOTAL	11122	100.0%

Gender of Students		
Gender	Count	Percent
Male	6484	58.4%
Female	4626	41.6%
TOTAL	11110	100.0%

Students Planning on Going to College		
College	Count	Percent
Yes	10757	96.8%
No	92	0.8%
Undecided	260	2.3%
TOTAL	11089	100.0%

Racial Heritage of Students		
Racial Heritage	Count	Percent
White	8804	79.7%
Black/Afr. Amer.	655	5.9%
Hispanic/Latino	316	2.9%
Asian	258	2.3%
Native Hawaiian	38	0.3%
Amer.Ind./Alsk.Nat.	32	0.3%
Other Pac. Islander	50	0.5%
Other	899	8.1%
TOTAL	11052	100.0%

Participants in Co-curricular Activities		
Co-curricular	Count	Percent of Students
Music	2262	20.4%
Theater	1101	9.9%
Sports	7887	71.0%
Academic Clubs	2190	19.7%
Student Council	2397	21.6%
Other	2984	26.9%
Not Involved	819	7.4%
TOTAL	19640	

©KristinBMelley/Boston College

2006-2008 Aggregate
Catholic Identity

A Catholic school is more than a school that has religion classes. There are numerous factors that attest to the Catholic identity of a school from the posters in the hallways to prayers in the cafeteria. To be effective as an institution that promotes faith, a school's apprenticeship to Jesus must permeate the building and not be restricted to First Fridays or the chapel.

Survey Statements	Total in Agreement	Gender		Grade			
		Male	Female	9	10	11	12
Teachers encourage me to look for God in my everyday life.	53%	56%	54%	64%	54%	47%	44%
I feel comfortable sharing my religious beliefs in class.	68%	68%	67%	71%	66%	68%	65%
I accept all people as they are.	86%	82%	91%	87%	86%	85%	84%
I feel comfortable attending our school's religious services.	73%	70%	76%	76%	74%	72%	67%
I talk to my friends about God.	27%	23%	31%	25%	25%	27%	29%
Discussions about religion are a part of all my classes.	27%	27%	26%	33%	26%	23%	24%
School is teaching me to be an honest person.	62%	62%	61%	67%	60%	58%	59%
Prayer is an important part of the school day.	53%	53%	53%	62%	55%	49%	44%
I turn to God in difficult times.	56%	52%	61%	61%	56%	53%	51%
The school expects me to participate in community service.	85%	83%	89%	85%	87%	86%	84%

What's asking kids to pray about these things? What is your context?

- Who are the people who love you?
- Who are the people who are hard for you to love?
- How do you feel about the place you call home?
- What do you dislike about yourself?
- What do you like about yourself?
- What do you grieve?
- What is missing from your life?
- Who is missing from your life?
- What do you desire?

Timeless qualities of a person of faith



What does your school mission statement say?

4 Timeless Qualities of a person of faith

- Ingenuity
- Resilience
- Courage
- Living for others
- Sense of Purpose



Ingenuity

Faith as process. Learning

Alvin Toffler



Learn.
Unlearn.
Relearn.

© Boston College/Kristin Barstow Melley



© Boston College/Kristin Barstow Melley

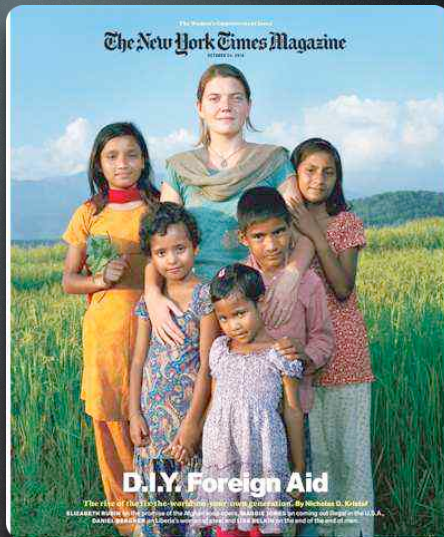
Living for others

Maggie Doyne



- <http://blinknow.org>

"I believe that
in the blink of
an eye, we can
all make a
difference."



© Boston College/Kristin Barstow Melley

Eli & Samuel

How are you
a witness
for your
students?



© Boston College/Kristin Barstow Melley